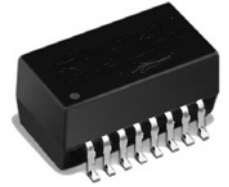


FEATURES

- For Adapter Cards, MAUs, Hubs, and Motherboard Applications
- Designed to meet or exceed IEEE 802.3, 10Base-T specifications
- Available with common mode chokes for EMI suppression
- Surface mount, IC grade, transfer-molded package withstands 235°C peak temperature profile

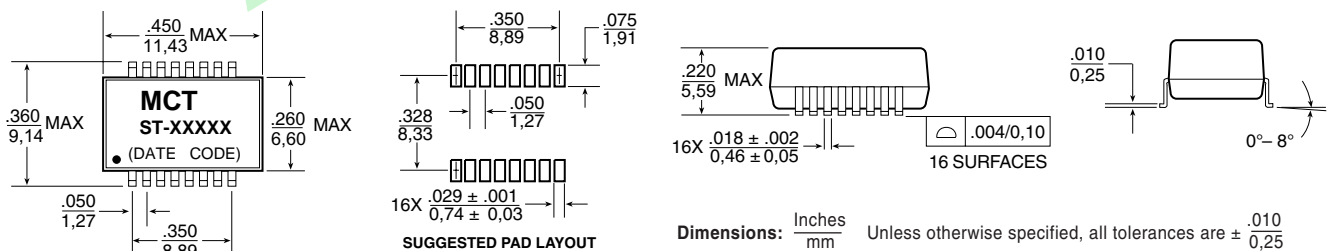


Electrical Specifications @ 25°C — Operating Temperature 0°C to 70°C

Part Number	Turns Ratio (±5%)		Primary Pins	Common Mode Choke	Sine Wave Inductance OCL (μH MIN)	Interwinding Capacitance C _{ww} (pF MAX)	Leakage Inductance L _L (μH MAX)	DCR (Ω MAX)	Hipot (Vrms)	Schem.
	Transmit	Receive								
MCTN114SM	1CT:1CT	1CT:1CT	1-3/6-8		200	12	0.3	0.3	2000	A
MCTN128SM	1CT:1.414CT	1CT:1CT	6-8/1-3		200	15	0.5	0.4	2000	A
MCTN356SM	1CT:1.414CT	1CT:1CT	6-8/1-3	X	200	12	0.5	0.6	2000	D
MCTN435SM	2CT:1CT	1CT:1CT	1-3/6-8		100	10	0.4	0.5	2000	A
MCTN467SM	1CT:2CT	1CT:1CT	6-8/1-3	X	140	12	0.2	0.6	2000	D
MCTN 2023	1CT: 2.5CT	1CT: 1CT	6-8/1-3	X	200	15	0.5	0.4	2000	E
MCTN 4001	1CT:2CT	1CT:1CT	6-8/1-3	X	112	8	0.3	0.8	3000	B
MCTN 4005	1CT: 2.5CT	1CT: 1CT	6-8/1-3	X	200	10	0.4	0.5	1500	E
MCTN 5017	1CT:1CT	1CT:1CT	1-3/6-8	X	200	10	0.25	1.0	1500	C
MCTN 2024	1CT: 2.5CT	1CT:1CT	6-8/1-3	X	350	30	0.8	0.6	2000	E
MCTN-85726	1CT:1CT	1CT:1CT	1-3/6-8		200	10	0.2	0.3	2000	A
MCTN 5745	1CT: 1.414CT	1CT:1CT	6-8/1-3		140	12	0.2	0.3	2000	A
MCTN 8023	1CT:2CT	1CT:1CT	1-3/6-8	X	200	12	0.3	1.0	1500	C
MCTN 8041	1CT:2CT	1CT:1CT	6-8/1-3		112	8	0.3	0.5	1500	A
MCTN 8048	1CT: 1.414CT	1CT:1CT	6-8/1-3	X	110	15	0.4	1.0	1500	B
MCTN 8052	2CT:1CT	1CT:1CT	1-3/6-8	X	140	12	0.3	1.0	1500	C

Note: 1. OCL, C_{ww} and L_L are measured at 20 mVrms, 100 kHz. 2. Add suffix NL for RoHS compliant parts, e.g. ST-F2023 changes to ST-F2023NL
3. ST-F2024 are extended temperature parts -40°C to 85°C, electrical specifications @ 25°C.

Mechanicals



Schematics

