

Description

- The MCTAIE3 power entry module combines an IEC inlet, mains filter with excellent filter attenuation and fuses in a small form factor.
- Exceptional conducted attenuation performance, based on chokes with high saturation resistance and excellent thermal behavior.
- Rated currents up to 10A
- For one or two fuses
- High performance-to-price ratio
- Optional medical versions (B type)
- Custom-specific versions are available on request.

Electrical Schematic:

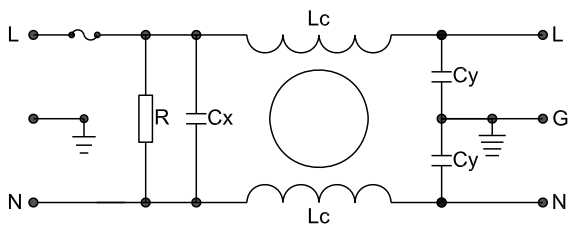


Fig 1

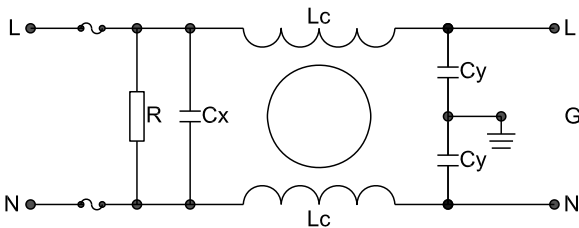


Fig 2

Typical Applications :

- Small to medium-sized machines and household equipment
- Portable electrical and electronic equipment
- Single-phase power supplies, switch-mode power supplies
- Test and measurement equipment
- Medical equipment

Specification :

Rated Voltage:	120/250VAC
Operating frequency:	50/60Hz
Rated Current:	1A~10A
Temperature range :	HPF 25/085/21
Test voltage(1min):	
Line to ground :	2000VAC
Line to Line :	1450VDC

Dimension: unit :mm

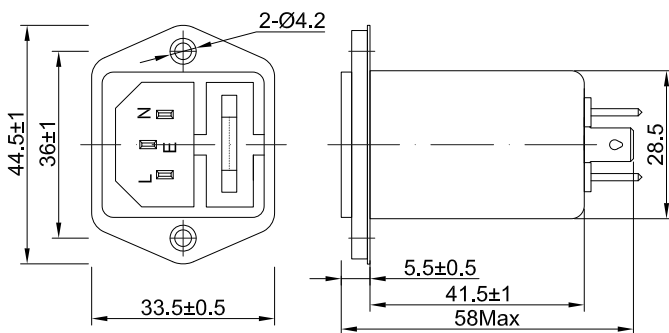


Fig 26

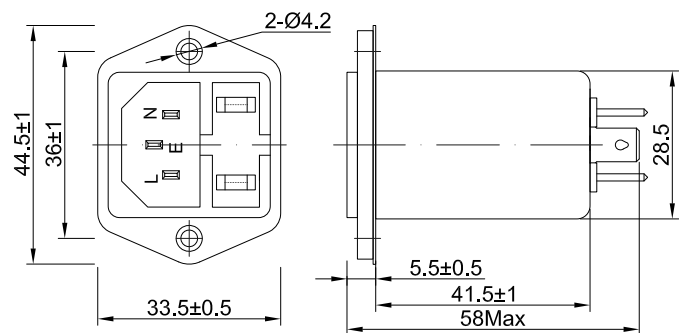










Fig 27

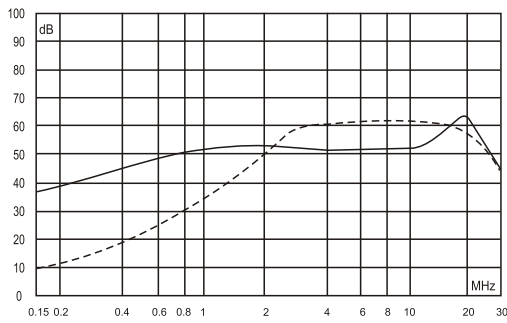
Data table:

MCT P/N:	Rated Current: A	Rated Voltage: V	Leakage Current: mA	Input/Output connections	Electrical Schematic:	Dimension
MCTAIE3-1-1	1	120/250	0.5		1	26
MCTAIE3-3-1	3	120/250	0.5		1	26
MCTAIE3-6-1	6	120/250	0.5		1	26
MCTAIE3-10-1	10	120/250	0.5		1	26
MCTAIE4-1-1	1	120/250	0.5		2	27
MCTAIE4-3-1	3	120/250	0.5		2	27
MCTAIE4-6-1	6	120/250	0.5		2	27
MCTAIE4-10-1	10	120/250	0.5		2	27

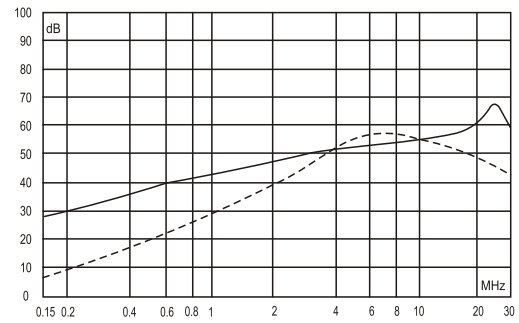
Insertion Loss in dB:

(Measured in 50Ω system, as IEC/CISPR NO.17)

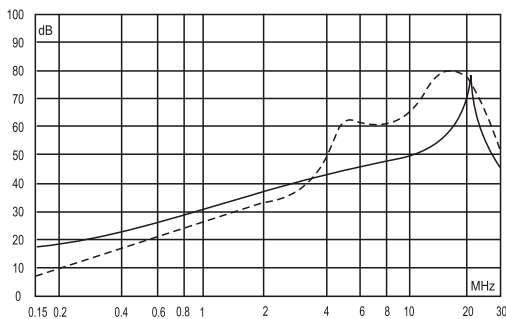
----- Differential Mode
———— Common Mode



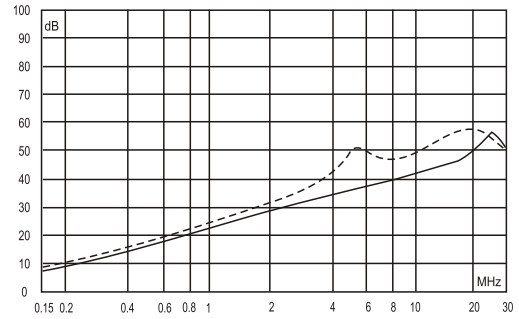
1A



3A



6A



10A