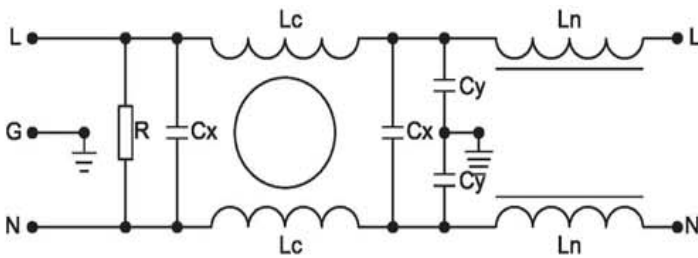


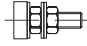
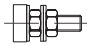
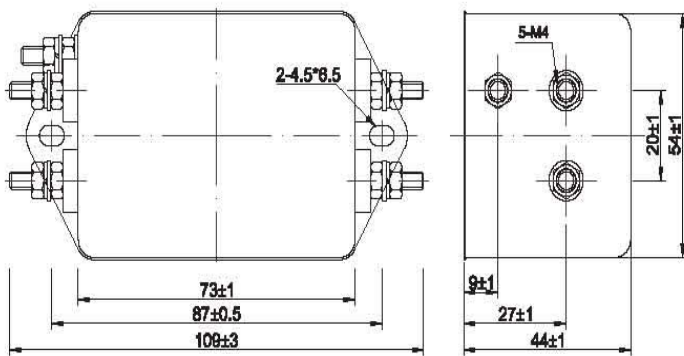
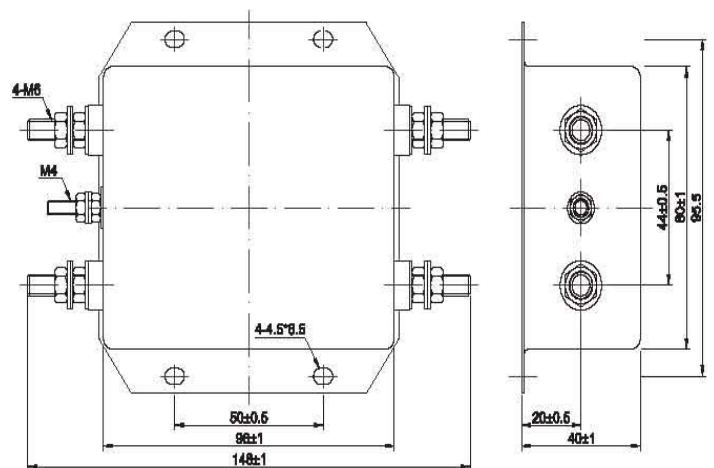


Description

- High performance with differential mode choke.
- Good low frequency attenuation.
- Available for inverters and available for speed motor device, which meet the RFI electromagnetic compatibility of European standard.
- Custom design acceptable.

Electrical Schematic:

Fig 1
Data table:

MCT P/N:	Rated Current: A	Rated Voltage: V	Leakage Current: mA	Input/Output connections:	Electrical Schematic:	Dimension:
MCT5INV-6-6	6	120/250	0.5		1	5
MCT5INV-10-6	10	120/250	0.5		1	5
MCT5INV-16-6	16	120/250	1.0		1	6
MCT5INV-25-6	25	120/250	1.0		1	6

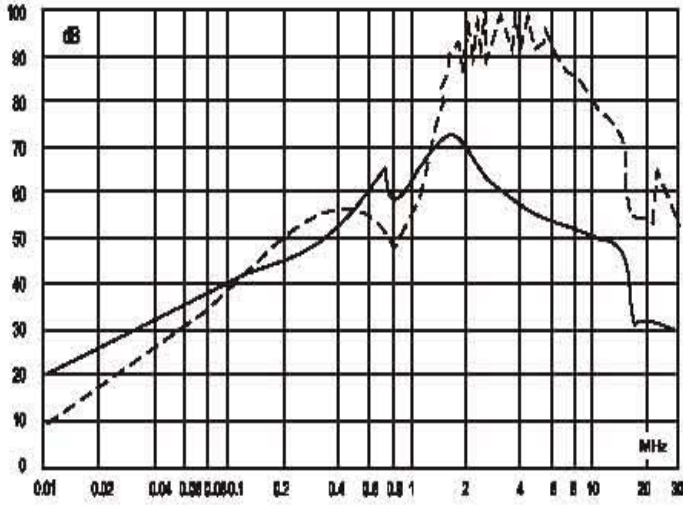
Dimension: unit :mm

Fig 5

Fig 6
Typical Applications :

- Inverter , Variable frequency equipment, Building automation , Industrial application .
- Machinery , Electronic data processing equipment , etc.

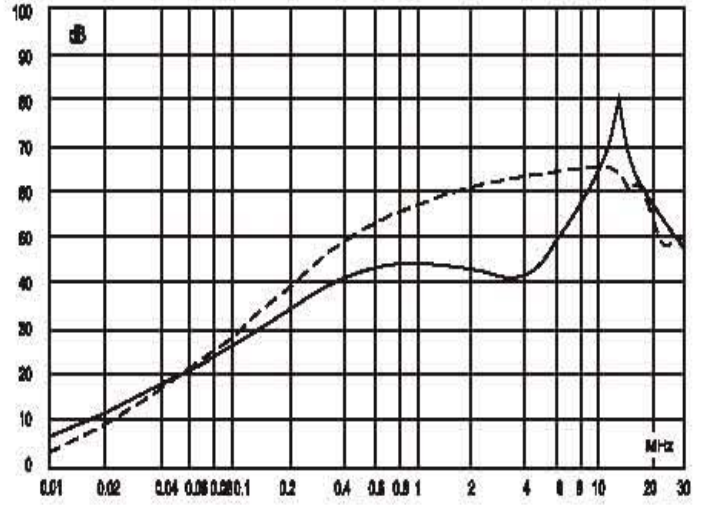
Specification :

Rated Voltage:	120/250VAC
Rated Current:	6A~25A
Operating Frequency:	50/60Hz
Temperature range :	HPF 25/085/21
Test Voltage (1min):	
Line to Ground:	2000VAC
Line to Line:	1450VAC
Leakage current(max) :	
Line to Ground:	@250VAC/50Hz

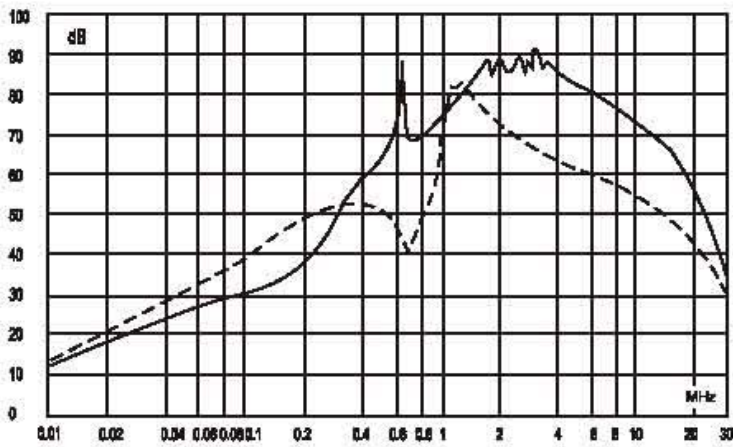
Insertion Loss in dB:



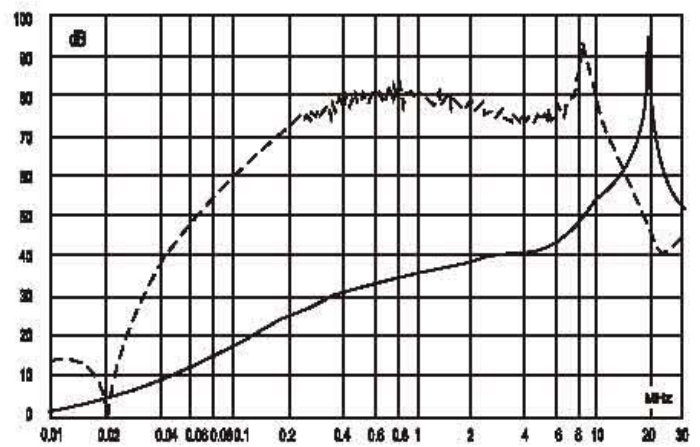
6A



10A



16A



25A